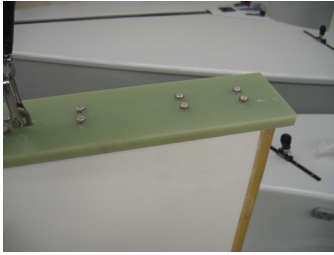
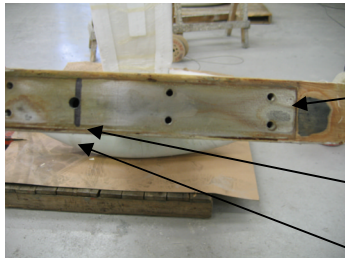


Adding lead to SB3 keel March 2008



1. Remove the G10 top plate 10mm bolts carefully
2. With a sharp knife cut the sikka flex joint between the G10 and the keel.
3. Remove the G10 – this will require some force to release the sikka flex seal



4. Measure 165mm from the front of the keel top plate steel edge
5. Mark a line at 165mm
6. Drill a 5mm hole in the middle followed by a 8mm hole.

7. This is locating a steel box section which runs full length of the keel fin into the bulb. The box section is 80mmx40mm



8. Fill with the required lead shot to bring up to max weight. Remember that the keel G10 and buffers are included in the max weight of 327kg.
9. Seal hole with sikka flex
10. Refit G10 it is important to reseal all screw holes and G10 plate with Sikka flex or marine sealant.

This can be done in the boat.